

BaSyTec

Battery Capacity Tester Family

For: Service
Quality control

Measures the battery capacity
by a defined discharge test.

For all battery chemistries

Compact and portable

Simple to use



Power up to 600 W
Current up to 32 A
Voltage up to 45 V

Battery Capacity Tester Family

Principle

The BaSyTec Battery Capacity Tester is used for measuring the capacity of NiCd, NiMH, lead-acid and lithium-ion batteries. Therefore a fully charged battery is discharged with a selectable current until the end of discharge voltage is reached. All relevant values are measured and displayed. Optionally a Windows(R) software for graphical analysing and reporting is available.

Simple to use

The BaSyTec Battery Capacity Tester is easy to use. There is no expert knowledge necessary:

1. Select battery type
2. Select rated voltage
3. Select discharge current
4. Select rated capacity
5. Press the START button

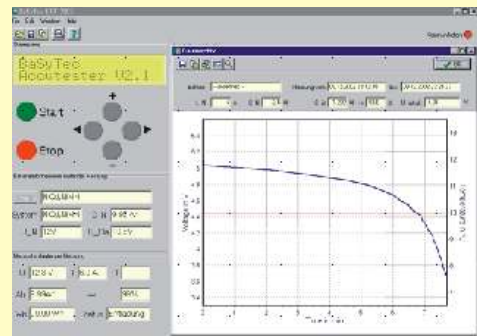
During the discharge process all relevant data is displayed:

- Battery temperature Discharged energy
- Battery voltage Discharged capacity
- Discharged capacity in % of the rated capacity

Windows(R) software

The optionally available software has the following features:

- Displaying actual measured data
- Storing data on disk
- Reviewing of stored data
- Graphical analyses of U and T
- Printing reports



Technical data

	BCT150	BCT250	BCT500	BCT750
Current (1A steps)	1 .. 10A	1 .. 12A	1 .. 24A	1 .. 32A
Max. discharge power	150W	200W	400W	600W
Voltage	2 .. 30 V		4 .. 30V	
Operation temperature	- 20 .. 40°C			
Selectable parameters	rated voltage, current, capacity			
End of discharge voltage	selectable			
Cell number detection	automatic and manual			
Battery chemistry detection	automatic (NiCd / NiMH) or manual			
Accuracy	0.5% of full scale range			
Measured values	voltage, current temperature (NTC)			
Calculated values	Ah, Wh, % of rated capacity			
Protection	reverse polarity over temperature			
Display	LCD 2 lines with backlight			
Power supply	12V dc (with ac/dc converter)			
Size (w*h*d)	106*170*204mm			260*150*330
Options	RS232 interface + BCT Software 16Bit voltage measurement 45V voltage range			

BaSyTec GmbH

Rosenweg 7, 89129 Öllingen

Tel.: +49-7345/238 500, Fax: +49-7345/238 725, www.basytec.de